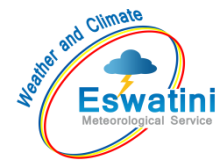


AGROMETEOROLOGICAL BULLETIN

Doc No: TEA 3/3/7/2 F-004
Revision No: 1
Effective Date: 01.07.2017
Page No: 1 of 5
Approved by:



REPORTING PERIOD:
01 – 10 MARCH 2025



ISSUE No.: 16

SEASON: 2024/25

RELEASED: 14/04/2025

CONTENTS

| | |
|----------------------------------|---|
| CONTENTS | 1 |
| HIGHLIGHTS | 1 |
| RAINFALL AND TEMPERATURES | 2 |
| RAINFALL | 2 |
| TEMPERATURES | 3 |
| MAIZE AND OTHER CROPS..... | 3 |
| MAIZE CROP STAGE AND CONDITION.. | 3 |
| OTHER CROPS | 3 |
| CURRENT FARMING ACTIVITY | 3 |
| LIVESTOCK AND PASTURES | 3 |
| WATER SITUATION | 4 |
| MEDIUM-TERM OUTLOOK | 4 |
| RAINFALL | 4 |
| TEMPERATURE | 4 |
| SOIL MOISTURE | 4 |
| WIND SPEED..... | 4 |

HIGHLIGHTS

- **Not much rainfall observed...**
- **Good vegetation condition....**
- **Slight increase in rainfall anticipated**
- **Warm to hot temperatures forecasted...**
- **Improvement in soil moisture expected.....**

Compiled and Issued by: Agrometeorological Unit,

Swaziland Meteorological Service, Ministry of Tourism and Environmental Affairs.

Box 2652, Mbabane, Swaziland. ☎ (+268) 2404 8859 / 2404 6274. Fax: 2404 1530

E-mail: dudu@swazimet.gov.sz

AGROMETEOROLOGICAL BULLETIN

Doc No: TEA 3/3/7/2 F-004

Revision No: 1

Effective Date: 01.07.2017

Page No: 2 of 5

Approved by:

RAINFALL AND TEMPERATURES

RAINFALL

Not much rainfall was observed in the 1st dekad of March 2025 (**Figure 1** and (**Map 1**).

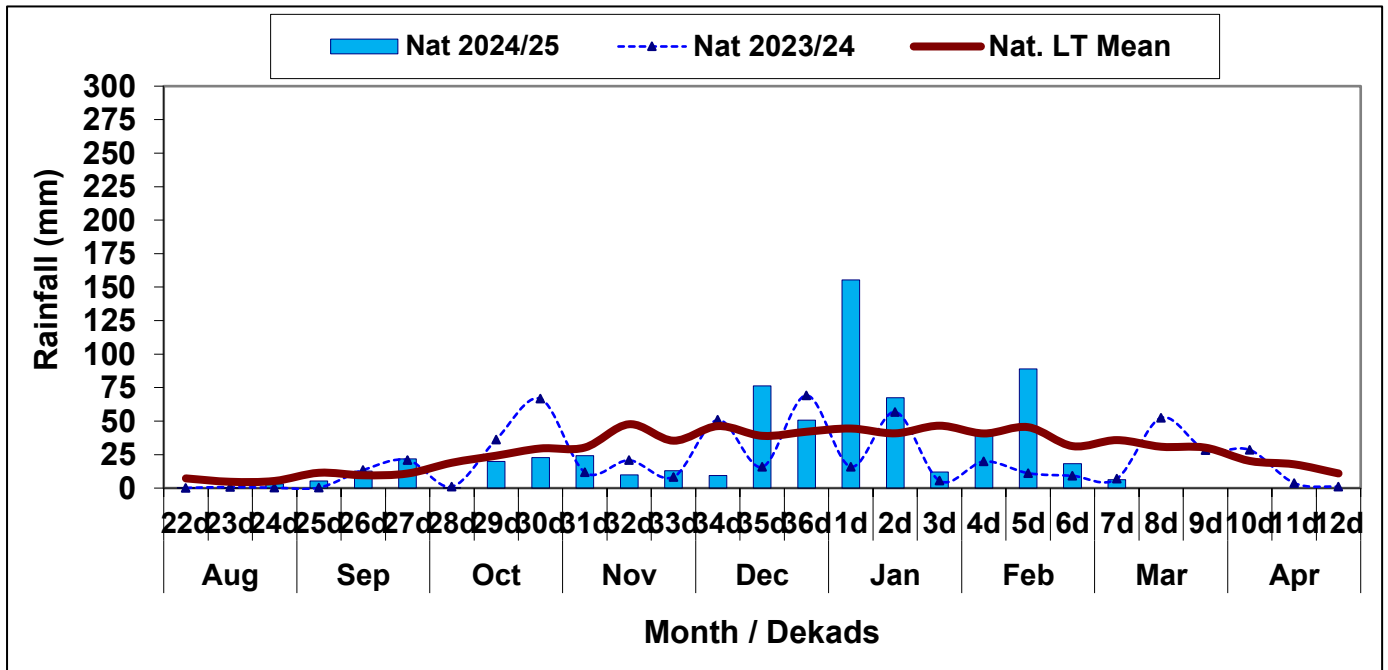
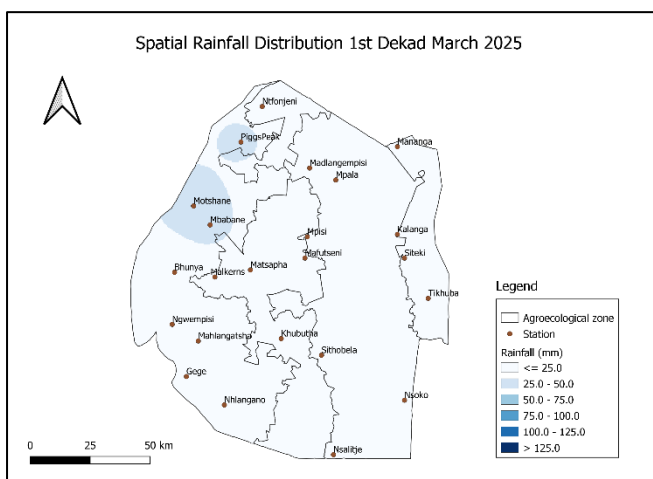
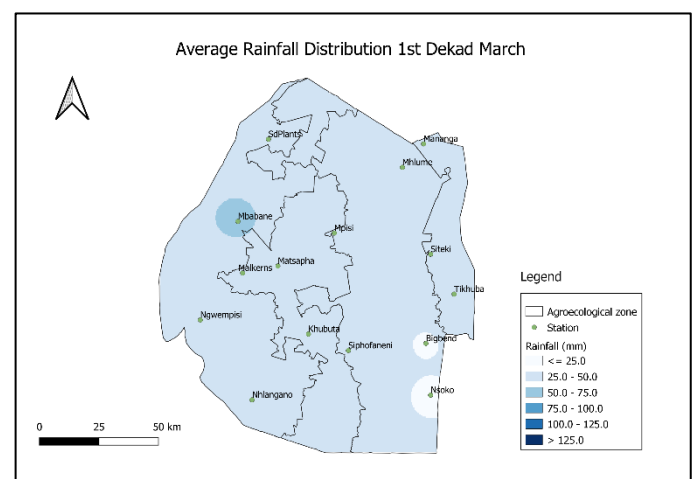


Figure 1: Rainfall distribution 1st dekad March 2025



Map 1: Spatial rainfall distribution 1st dekad March 2025



Map 2: Average rainfall distribution 1st dekad March

Compiled and Issued by: Agrometeorological Unit,

Swaziland Meteorological Service, Ministry of Tourism and Environmental Affairs.

Box 2652, Mbabane, Swaziland. ☎ (+268) 2404 8859 / 2404 6274. 📠 Fax: 2404 1530

E-mail: dudu@swazimet.gov.sz

AGROMETEOROLOGICAL BULLETIN

Doc No: TEA 3/3/7/2 F-004

Revision No: 1

Effective Date: 01.07.2017

Page No: 3 of 5

Approved by:

Rainfall observed was below average in all the Agroecological regions during the reporting period (**Table 1**).

Table 1: Rainfall (mm) 1st dekad March 2025

| | HV | MV | LV | LP |
|---------|-----|-----|-----|-----|
| 2023/24 | 5 | 8 | 7 | 9 |
| Average | 48 | 31 | 28 | 40 |
| 2024/25 | 13 | 4 | 1 | 3 |
| Anomaly | -35 | -27 | -27 | -37 |

TEMPERATURES

Warm to hot temperatures were generally observed during the reporting period. Most of the regions observed above average temperatures (**Figure 2**).

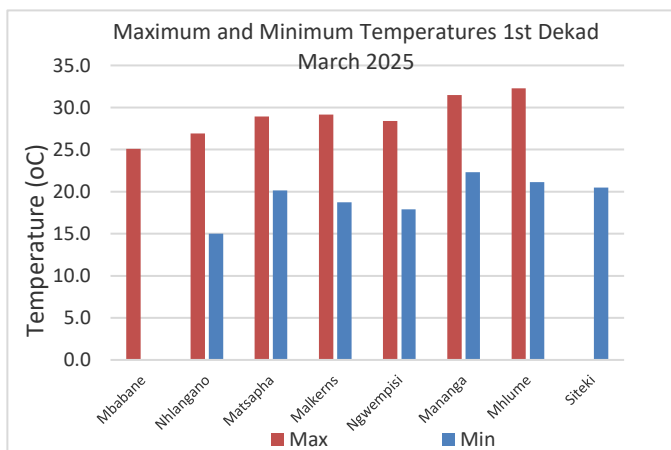


Figure 2: Maximum and Minimum temperatures 1st dekad of March 2025

MAIZE AND OTHER CROPS

MAIZE CROP STAGE AND CONDITION

Maize is mostly at flowering and maturing stages. The condition is mostly good.

OTHER CROPS

No other crops have been reported to have been planted as yet.

CURRENT FARMING ACTIVITY

Very few farmers harvesting early planted maize.

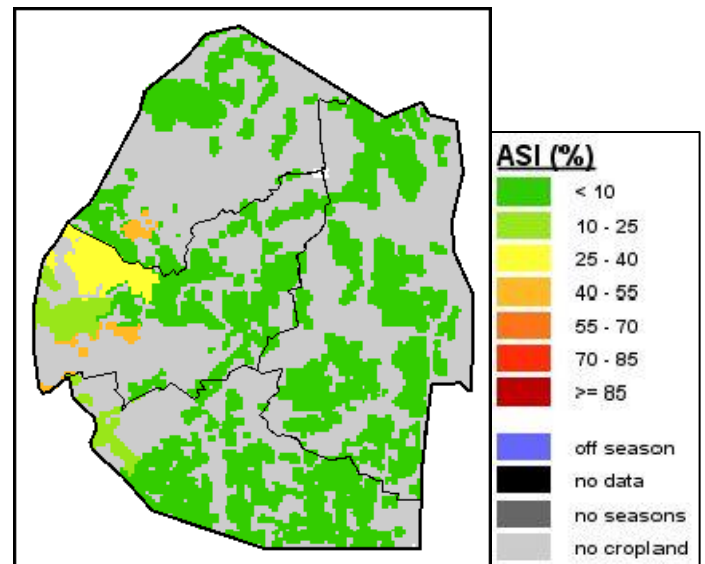


Image 1: Agriculture Stress Index 1st dekad March 2025
Source: FAO-GIEWS

LIVESTOCK AND PASTURES

Livestock is in good condition as rangelands are reported to be in good condition.

Compiled and Issued by: Agrometeorological Unit,

Swaziland Meteorological Service, Ministry of Tourism and Environmental Affairs.

Box 2652, Mbabane, Swaziland. ☎ (+268) 2404 8859 / 2404 6274. Fax: 2404 1530

E-mail: dudu@swazimet.gov.sz

AGROMETEOROLOGICAL BULLETIN

Doc No: TEA 3/3/7/2 F-004

Revision No: 1

Effective Date: 01.07.2017

Page No: 4 of 5

Approved by:

WATER SITUATION

Most dam levels are still at full capacities.

MEDIUM-TERM OUTLOOK

RAINFALL

An improvement in rainfall is anticipated in the outlook period.

TEMPERATURE

Cool, warm to hot temperatures are anticipated in the outlook period.

SOIL MOISTURE

An increase in soil moisture is expected in the outlook period.

WIND SPEED

Wind will generally be light during the outlook period.

NB: Outlook period is ten days from date of issue

Compiled and Issued by: Agrometeorological Unit,

Swaziland Meteorological Service, Ministry of Tourism and Environmental Affairs.

Box 2652, Mbabane, Swaziland. ☎ (+268) 2404 8859 / 2404 6274. Fax: 2404 1530

E-mail: dudu@swazimet.gov.sz

AGROMETEOROLOGICAL BULLETIN

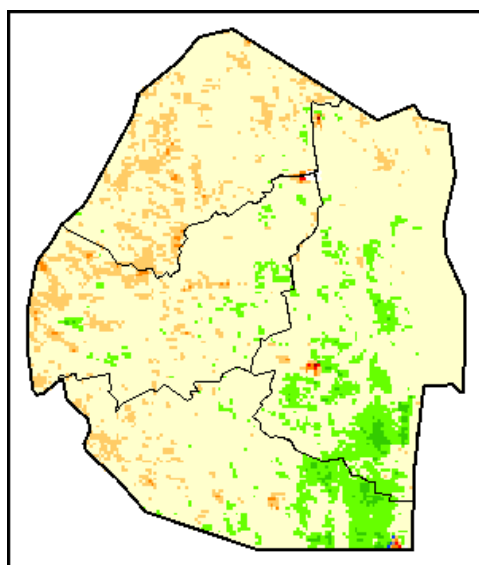
Doc No: TEA 3/3/7/2 F-004

Revision No: 1

Effective Date: 01.07.2017

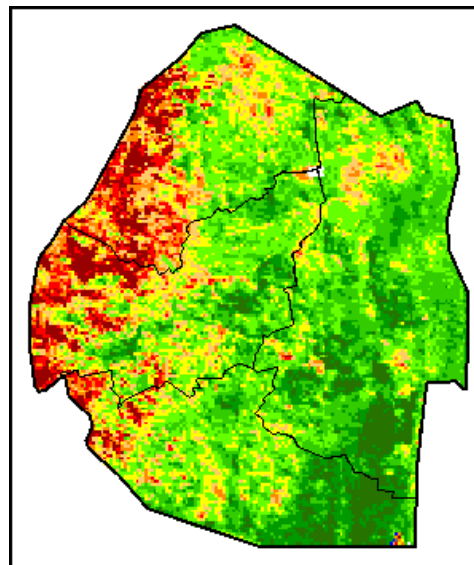
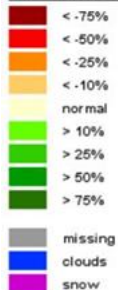
Page No: 5 of 5

Approved by:



Legend

Difference to LTA



Legend

VHI

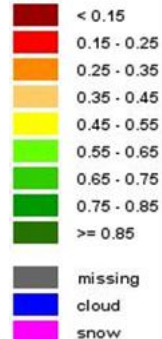


Image 2: Normalized Difference Vegetation Index (NDVI) Anomaly (1st Dekad March 2025)
Source: FAO-GIEWS

Image 3: Vegetation Health Index (VHI) (1st Dekad March 2025)
Source: FAO-GIEWS